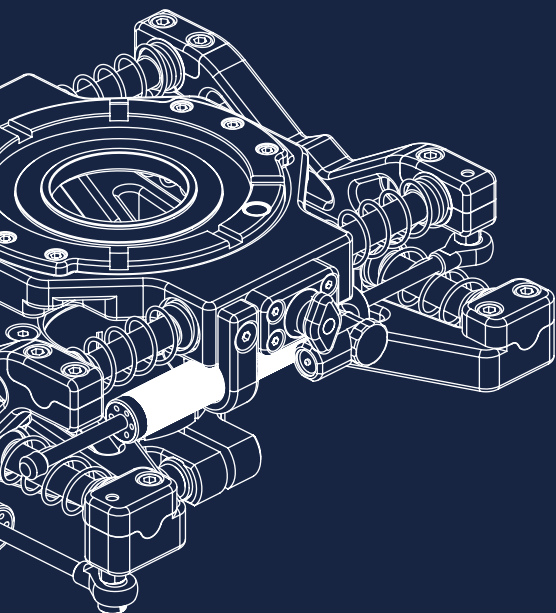
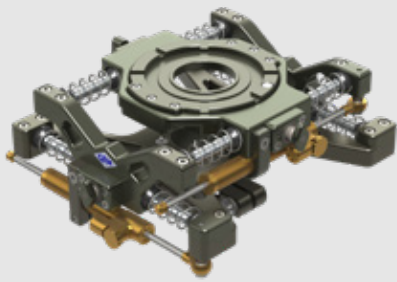


## // SUSPENSION RIGS



## // GF-VIBRATION ISOLATOR



**GF-1070** GF-Vibration Isolator and Mitchell plate and set of shocks [AL-2166 and GF-1074]

The low profile Vibration Isolator helps control vibrations in the X and Y horizontal axis. The standard springs provide a substantial reduction in abrupt stops and help smoothen out movement ends. Adjustable hydraulic shocks can be installed to increase the setting range. Drag adjustment and a complete lock off of the head is possible.

## FEATURES

- 9 kg / 20 lbs weight [basic version]
- Up to 85 kg / 189 lbs payload
- Temperature range from -20° to +50° C / -4° to +122° F [with hydraulic shocks]
- Dimensions [L x W x H]: 33 x 40 x 14.5 cm / 13" x 16" x 6"
- Supports bowl and Mitchell camera heads
- Interchangeable Euro-adaptor and Mitchell base mounts
- Dampening Standard: 8 springs / Optional: 2 adjustable hydraulic shocks



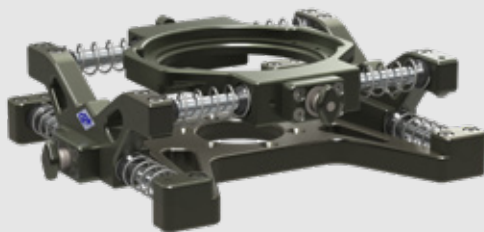
**AL-2447** Mitchell Castlenut Spanner    **AL-2446** Locking tool for remote head nuts/Mitchell fitting

For this product there is a custom designed flight case available!



**K-1545**

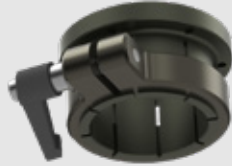
## ORDER NUMBERS / SPARE PARTS



**GF-1070** GF-Vibration Isolator [basic kit for Mitchell or Bowl]



**GF-1072** Mitchell base mount



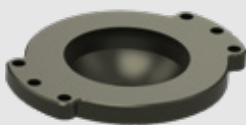
**GF-1073** Euro mount



**GF-1075** Riser 1" [2 pcs.]



**GF-1074** Set of shocks [2 pcs.]



**AL-2113** Bowl for VI 100 mm



**AL-2114** Bowl for VI 150 mm

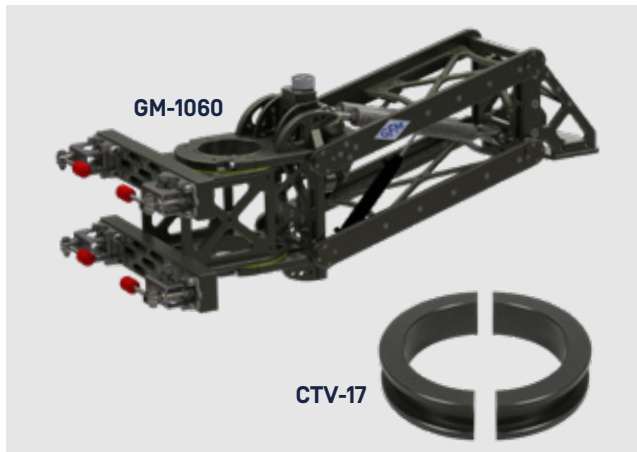


**AL-2166** Mitchell plate with 6 keyway slots and level indicator for VI



**AL-2160** Mitchell 4 way leveller for VI

## // GF-MAXI SHOCK ABSORBER



**GM-1060** Maxi Shock Absorber System for camera cars, mounts to 150 mm tube and Scaffold tube mount (48 mm tubes), Mitchell nose mount

**CTV-17** Collar for Maxi-Shock-Absorber 150 mm to 130 mm (2 pcs. required)

The Maxi Shock Absorber is for use with gyro stabilized heads to reduce high and low frequency vibrations and hard impact shocks during high speed chases on rough and bumpy terrain. The best results are achieved when used with the Iso Dampener. The Maxi Shock Absorber allows for individual adjustment and setting, depending on the choice of stabilized head and taking into consideration the terrain of the shooting environment.

### FEATURES

- Connects to 48 mm scaffold tube or 150 / 130 mm pole systems
- 180° horizontal adjustment range
- Over and underslung operation
- 41 kg / 90 lbs weight
- Up to 100 kg / 220 lbs payload
- Lift range: 30 cm / 11"
- Temperature range from -20° to +50° C / -4° to +122° F
- Dimensions (L x W x H): 103 x 26 x 40 cm / 40" x 10" x 15"

## // GF-MINI SHOCK ABSORBER

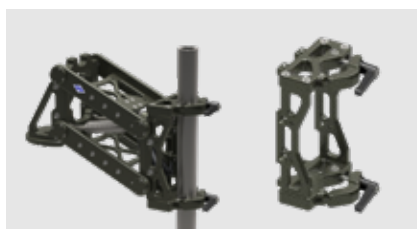


**GM-1065** Mini Shock Absorber

The Mini Shock Absorber is for use with gyro stabilized heads to reduce high and low frequency vibrations and semi-hard impact shocks during high speed chases and rough crane moves. The best results are achieved when used with the Iso Dampener.

### FEATURES

- Weight: 9.8 kg / 21 lbs
- Over- and underslung
- Mitchell or speedrail / scaffold mount
- Payload range: 10 kg / 22 lbs to 65 kg / 143 lbs
- Lift range: 16 cm / 6.5"
- Temperature range: -20° to +50° C / -4° to +122° F
- Dimensions (L x W x H): 38 x 19 x 34 cm / 14" x 7" x 13"



**GM-1069** Speedrail / Scaffold mount



**GM-1066** Bowl mount 150 mm



**AL-2447** Mitchell Castlenut Spanner **AL-2446** Locking tool for remote head nuts / Mitchell fitting



**GM-1068** Weight rod to increase nose load



**GM-1067** GF-8 angle adjuster mount

For the GF-Mini and Maxi Shock Absorber there are custom designed flight cases available!



**K-1535**  
Maxi



**K-1536**  
Mini



## // GF-ISO DAMPENER



For this product there is a custom designed flight case available!



**K-1537**

The Iso Dampener increases the efficiency of gyro stabilized heads by reducing rotational stress and smoothening out pan starts and stops on telescopic and fixed arm cranes by isolating high frequency vibrations between the mount and head. The Iso Dampener is mounted with a Mitchell connection to the crane or Mini and Maxi Shock Absorber, allowing individual adjustment and tuning, to best suit the choice of stabilized head as well as the shooting environment.

**FEATURES**

- Connects to cranes or Mini and Maxi Shock Absorber
- Allows individual adjustment and tuning
- Weight: 9.1kg / 20 lbs
- Payload: 85 kg / 189 lbs
- Temperature range: -20° to +50° C / -4° to +122° F
- Dimensions [L x W x H]: 42 x 42 x 22 cm / 16" x 16" x 8"

**GF-SUSPENSION RIGS ON SET**

